



# The TerSera Personalized Nursing Support Program

Connecting patients who have Carcinoid Syndrome diarrhea (CSD) to a Clinical Nurse Educator (CNE)

# We're here to help

## What do we provide?



### Personalized Nursing Support

- Connect with a consistent, dedicated Clinical Nurse Educator (CNE) who specializes in neuroendocrine tumors and CSD
- Your CNE will help make sure your nurses, physicians, and specialty pharmacists are kept up to date on your progress while on treatment



### Disease and Nutrition Education

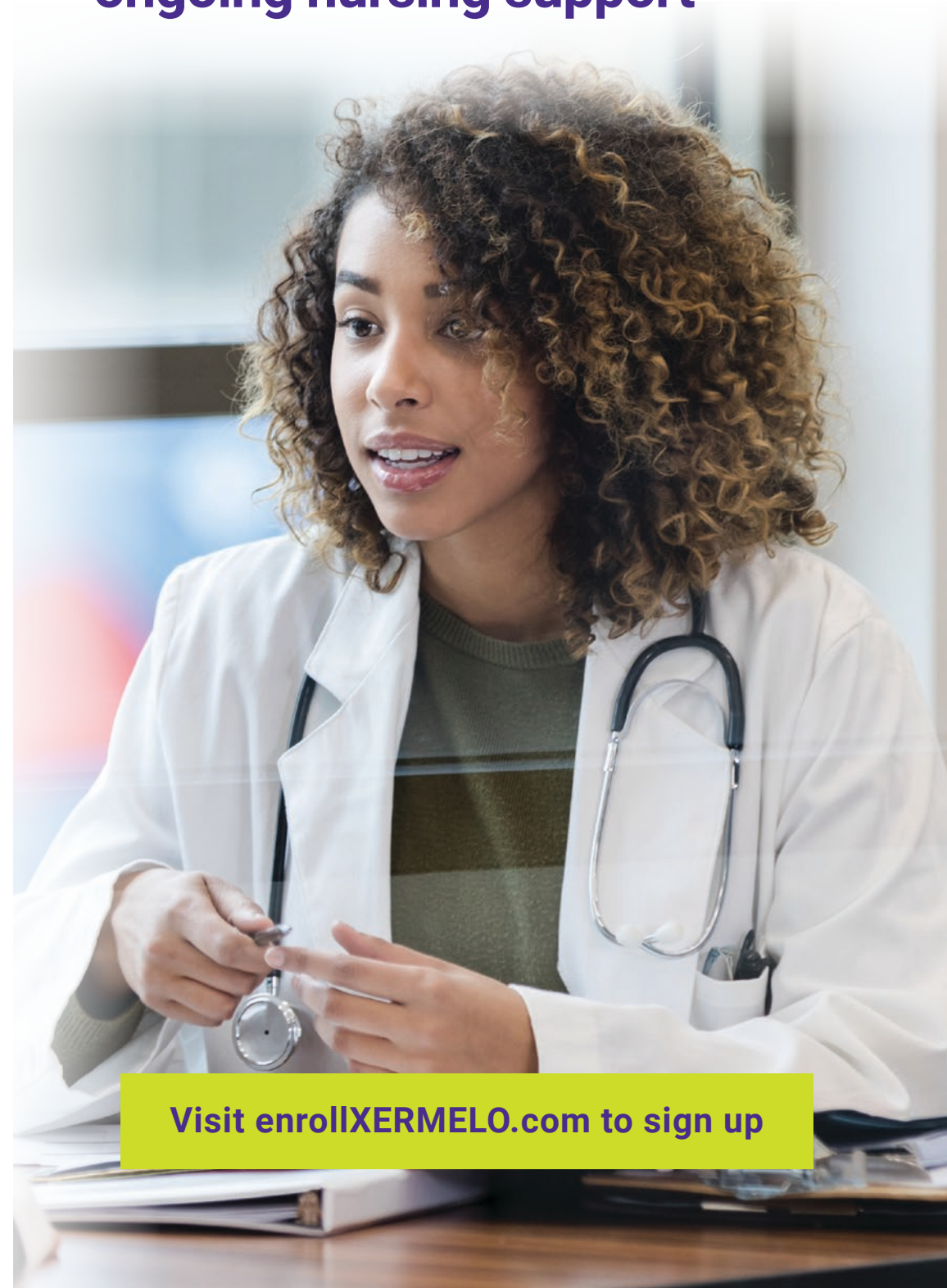
- Learn about the relationship between your diet and your CSD
- Understand the role of hormones, including serotonin, in neuroendocrine tumors
- Receive guidance for finding Carcinoid Syndrome–friendly foods (you'll receive a FREE Nutrition Guide)



### Coordination of Care

- Get help with navigating the specialty pharmacy enrollment process

## Sign up now for ongoing nursing support



Visit [enrollXERMEL0.com](https://enrollXERMEL0.com) to sign up





“ I love the Nutrition Guide. I feel as though the writer knows exactly how I’m feeling. I’ve read it a few times already and learn something new each time ”

—TerSera Nursing Support Program participant

## Indication

XERMELO is a prescription pill, used along with somatostatin analog (SSA) therapy, for Carcinoid Syndrome diarrhea in adults who are not adequately controlled by SSA therapy.

## Important Safety Information

- XERMELO may cause constipation which can be serious. You should stop taking XERMELO if severe constipation or severe, persistent, or worsening abdominal pain develops. Talk to your doctor if you have these symptoms.
- The most common side effects of XERMELO include nausea, headache, increase in liver enzymes, depression, flatulence, decreased appetite, swelling of your hands and feet, fever, abdominal pain, and constipation
- Talk to your doctor about all medications you are taking as some may interact with XERMELO
- XERMELO is not recommended if you have moderate or severe liver impairment

**Please see enclosed Full Prescribing Information.**